

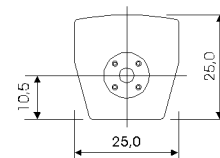
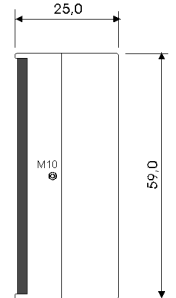
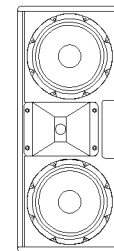
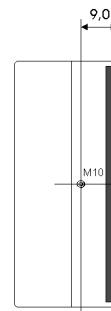
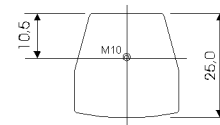
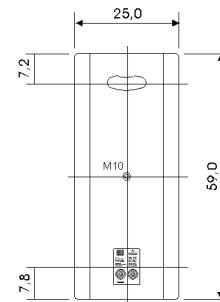
A3 / Fullrange - HighMid Sound System

Combined with the heavy-duty 1" driver / horn, the 2x 8" low-mid drivers guarantee high precision, especially in the mid/high range. With these features the A3 offers excellent speech intelligibility and high audio output.

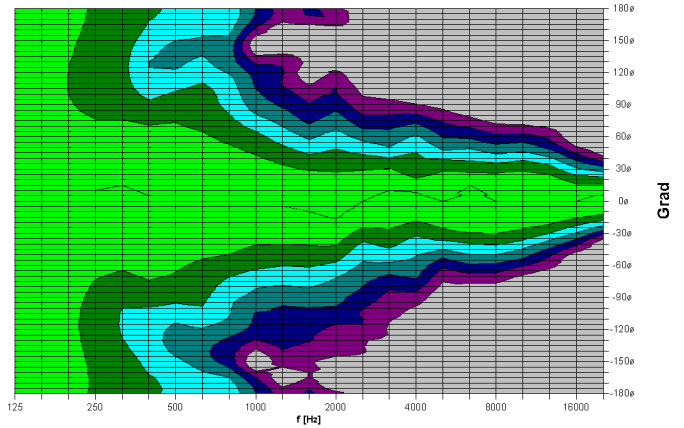


PRODUCT SPECIFICATIONS

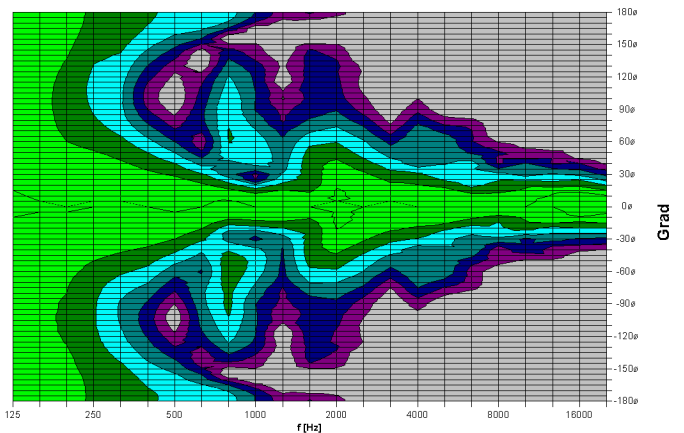
Speaker Components	2x 8" / 1"
Description	Fullrange - HighMid Sound System
Powerhandling - AES / Peak	200 Watt / 600 Watt
Impedance - nominal	4 Ohm - optional 16 Ohm
SPL 1m - 1Watt / Peak	99dB / 126dB
Usable Range	65Hz - 20kHz
Tuning Frequency - Excursion min.	60Hz
X - Overpoint - acoustical	1,3kHz
Connectors	2x Neutrik Speakon 4-pol
	Coding: 1+/- HiMid, 2+/- Sub
Coverage - horizontal / vertical	90° x 60°
Handles	ergonomic handle on backside
Rigging - flying points	4 x M10
Fittings	35mm pole mount
Weight	16,5kg
Size - height x width x depth	59,0 x 25,0 x 25,0 cm
Art. Nr.	0240



A3 90°x 60° horizontal - 2D Directivity Plot



A3 90°x 60° vertikal - 2D Directivity Plot

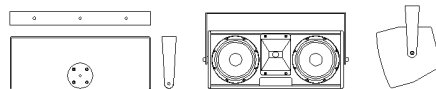


For more information, please visit our Data CD-Rom

Accessories (more accessories you can find in our general list of accessories)

Flying Bracket for A3 horizontal assembly incl. screws

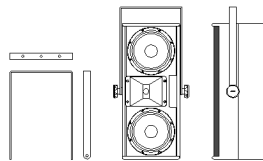
(per unit: 2 pcs. M10 x 20 socket head screws,
spring - and rubber washers.
One piece of 110 mm flange with M10 nut
- optional feature: 2 pcs. M10 x 20 ergostyle lobe knob)



Order number: 01215H set

Flying Bracket for A3 incl. screws

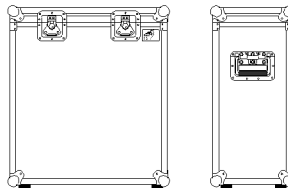
(per unit: 2 pcs. M10 x 20 ergostyle lobe knob
and rubber washers)



Order number: 01215 set

Flightcase for 2 pcs. A3 - trunk

Heavy duty, 6.5 mm birch multiplex, PVC coated, ball corners,
recessed sprung handles, butterfly catches, rubber bases,
interior lined with felt.



Order number: 16066

More flightcases on request