

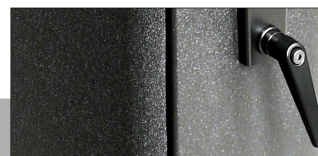
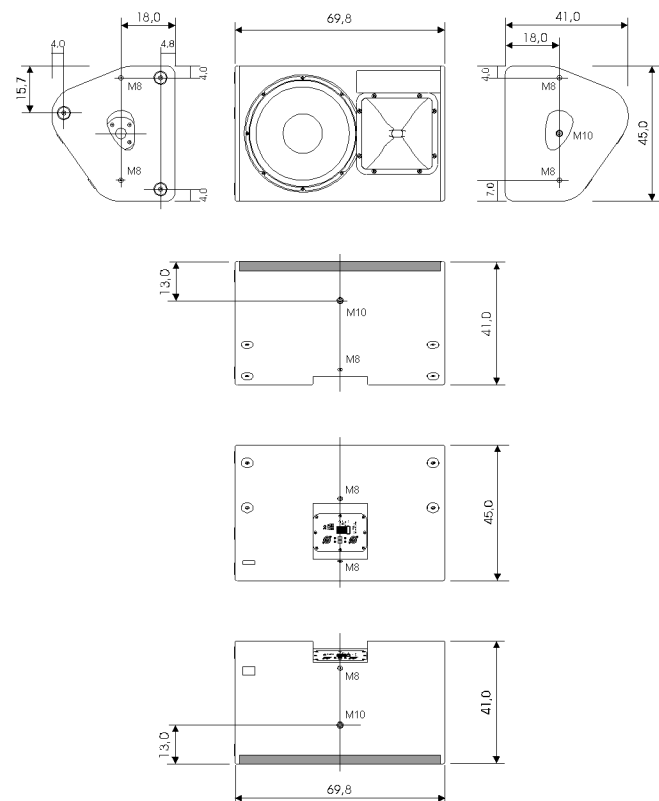
TSM 15 / High Performance Sound System for Multiple Use

The TSM15 is a multi-functional high-end loudspeaker. It has been optimised for use as a monitor and due to its swivel-mounted horn it can also be used for classic fullrange applications or horizontal assembly. Multifaceted possibilities for mounting flying accessories and a discreet, modern design render the TSM15 also suitable for permanent installations. In the case of applications requiring longer throw, the TSM15 can also be ordered with a narrower coverage angle of 60x50 degrees. Both TSM15 are also available as selfpowered dp-version with an 2 x 1000 Watt amplifier.

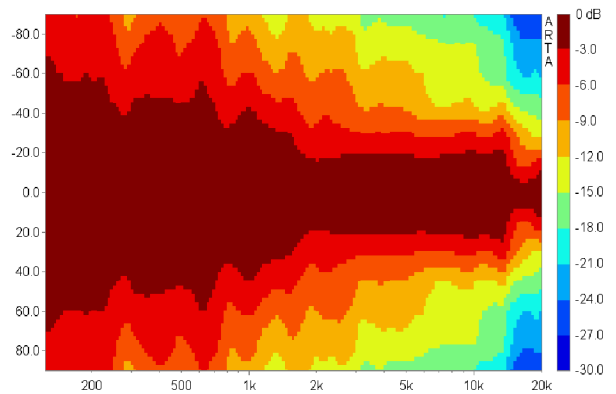


PRODUCT SPECIFICATIONS

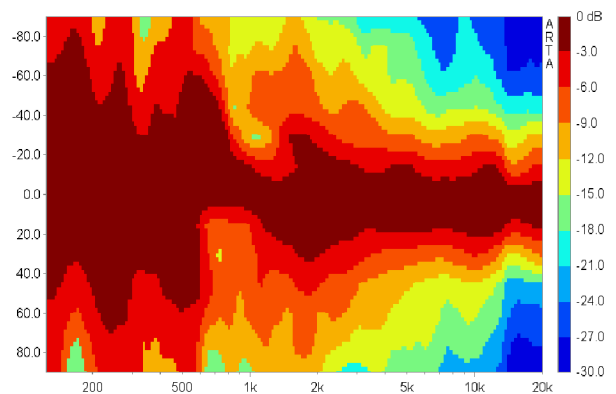
Speaker Components	15" Nd / 1,4" Nd
Description	Multipurpose Sound System
Powerhandling - AES / Peak	600 Watt / 1800 Watt
Impedance - nominal	8 Ohm
SPL 1m - 1Watt / Peak	98dB / 131dB
Usable Range	45Hz - 18kHz
Tuning Frequency - Excursion min.	50Hz
X - Overpoint - acoustical	1,0kHz
Connectors	2x Neutrik Speakon 4-pol Coding: 1+/- HiMid, 2+/- Low
Coverage - horizontal / vertical	90° x 60° - rotatable
optional	60° x 50° - rotatable
Handles	2x 4D handle
Rigging - flying points	3 x M10 / 6 x M8
Fittings	35mm pole mount
Weight	27,0kg
Size - height x width x depth	69,8 x 45,0 x 41,0 cm
Order Number	0950/90x60 0950/60x50



TSM15 horizontal - 2D Directivity Plot



TSM15 vertikal - 2D Directivity Plot

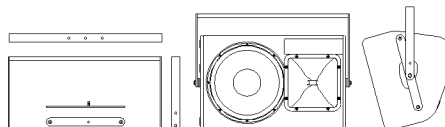


For more information, please visit our Data CD-Rom

Accessories (more accessories you can find in our general list of accessories)

Flying Bracket for TSM15 horizontal assembly incl. screws

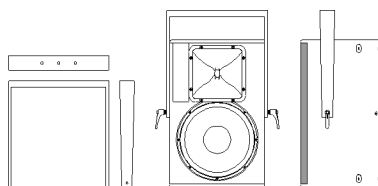
(per unit: 2 pcs. adapters, M10 hex lock nuts,
flat- and rubber washes,
- optional feature: 2 pcs. M10 x 20 ergostyle lobe knob)



Order number: 01217H set

Flying Bracket for TSM15 incl. screws

(per unit: 2 pcs. M10 x 30 adjustable clamping lever - with axial bearing)



Order number: 01217 set

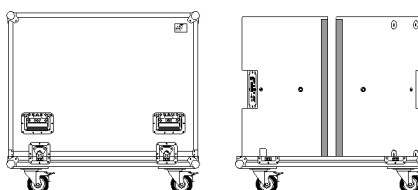
Cover for TSM15 - padded



Order number: 01240

Flightcase for 2 pcs. TSM15

Heavy duty, 6.5 mm birch multiplex, PVC coated, ball corners,
6 pcs recessed sprung handles, 4 pcs. butterfly catches,
100 mm Blue Wheels, 2 pcs. with brake, interior lined with felt.



Order number: 16012
More flightcases
on request